

SCSHA Guide To:

KINGMAN, KS



Accommodations

- Copa Motel
1113 US-54

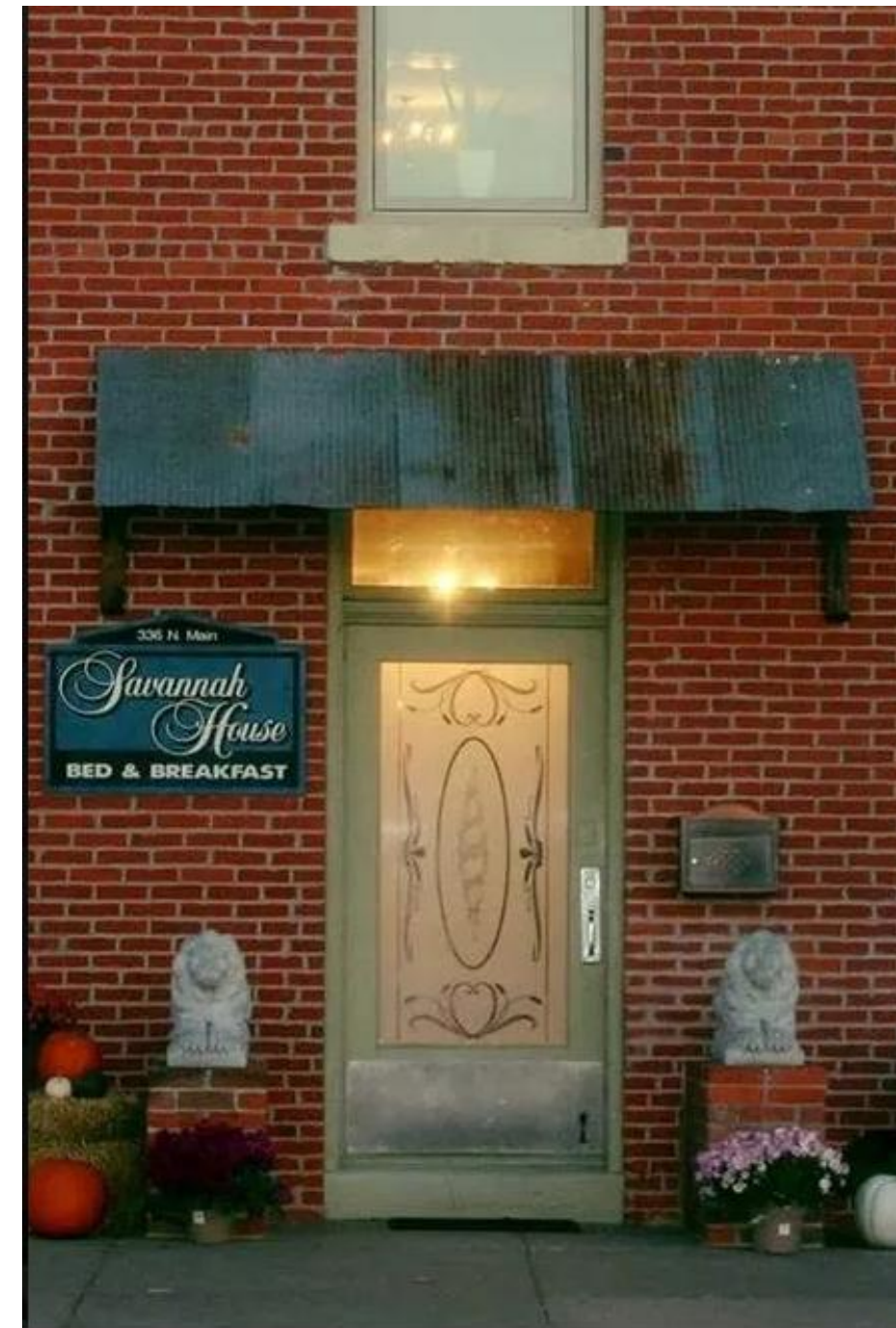


- Victorian Lantern B&B
134 W E Ave
(620)532-9179
<https://www.victorianlanternbandb.com/>



Accommodations (cont.)

- Savanna House B&B
336 N Main
(620)955-6179
<https://savannahhousebnb.wixsite.com/bandb>



- The Cannonball
1101 E US Highway 54
(620)474-9537
<https://www.thekingmancannonball.com/>

Accommodations (cont.)

- Champion Ridge B & B
5784 NE 10 St
(620)532-5693
<https://www.championridgeinn.com/>



- Petyt Creek Ranch Barn
About 5 miles east of
Kingman
(620)532-6460



RV Parks

- **Riverside RV Park**

Located on the Kingman County Fairgrounds near the Expo Center. There are 42 camper hookups – electric only – located around the perimeter of the grounds. There is a sewer dump on site, as well as water hydrants to fill water reservoirs.

Rentals are on a first come first serve basis and handled at **White's Foodliner** courtesy booth, 858 E D Avenue. Rental is \$12 per day and requires a \$25 key deposit.

Phone: 620-532-3851

- **Kingman, KS RV Park**

Visit Kingman RV Park today with your camper and check out the provisions we provide. Every individual parking space comes with water, sewer hookups, and charging stations that can accommodate 30 to 50-amp cords. This family owned RV park can easily accommodate up to 30 campers, with more than enough turning space.

810 East E Ave, Kingman KS

Phone: 620-491-2872

Email: n20709@gmail.com

- **Country RV Park**

Located 5 easy miles east of Kingman, 30 miles south of Hutchinson, and 30 miles west of Wichita long highway 54/400. 9 lots with water, septic, free internet, and 30 to 50-amp electric. The Country RV also has an underground storm shelter available on site.

5784 NE 10th Street, Kingman, KS

Phone: 620-532-4408

Restaurants

Sit – down

- Cancun Mexican Grill
245 N Main
- Jeri's Kitchen
312 N Main

Restaurants (continued)

Fast Food / Carryout

- Smitty's Carry Out
233 E D Ave
- China Chinese
1122 US-54
- Sonic Drive-In
1215 US-54
- Subway
900 US-54

- White's Foodliner
(deli section)
858 E D Ave
- Brickroad Coffee
109 N Main

Gas Stations

- Casey's, 442 E D Ave
- White's Foodliner, 858 E D Ave

Feed & Tack

- Fisher Lumber Co, 210 N Spruce St



Other

Just across the road from the arena is a very nice park – and a playground nearby for the littler ones. Access is easy through a tunnel under the road.

